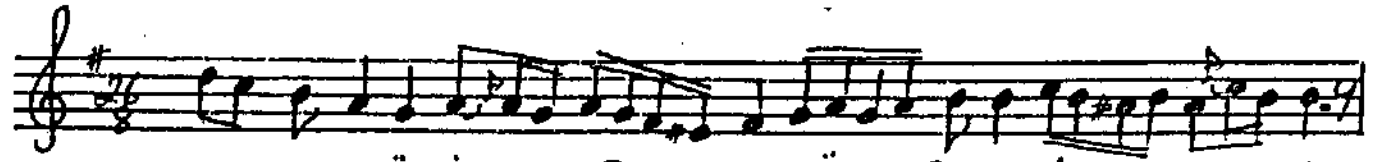


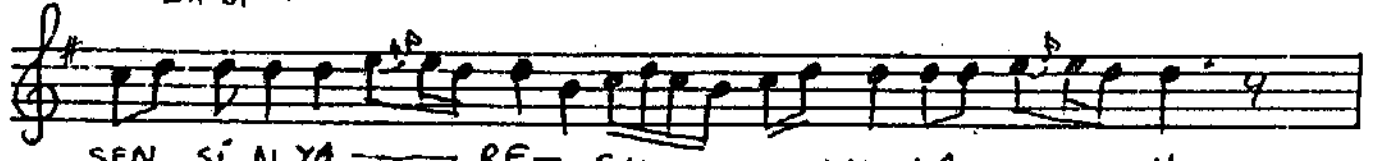
GÜFTE: HÜDAİ AZİZ MAHMUD EF.

BESTE: HACI ORIF BEY

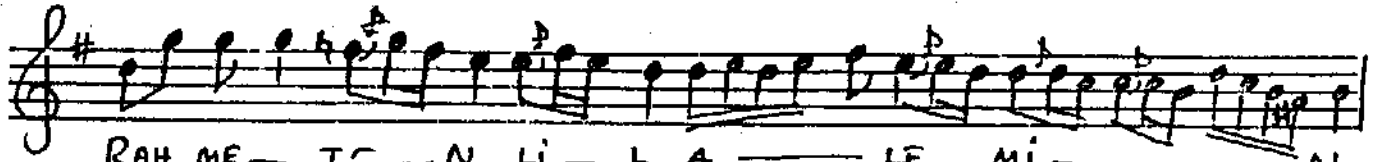
FUSAT D=112



SA Dİ RI - CÜ - M LE - - - - MÜ - - - R SE Lİ - - - - N



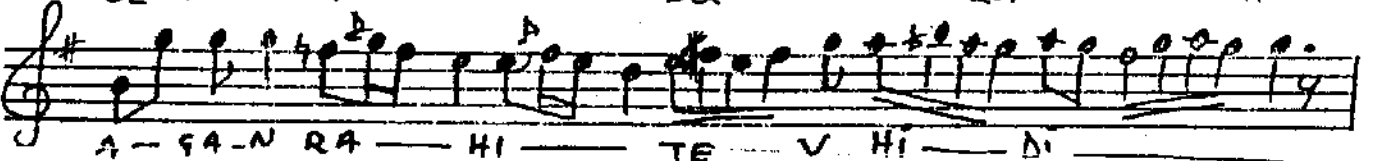
SEN Sİ-N YA - - - RE- SU - - - LAL LA - - - H



RAH ME- TE- N Lİ- L A - - - LE Mİ - - - N



SEN Sİ-N YA - - - RE SU - - - LAL LA - - - H



A- SA- N RA - - - HI - - - TE V HI - - - Dİ



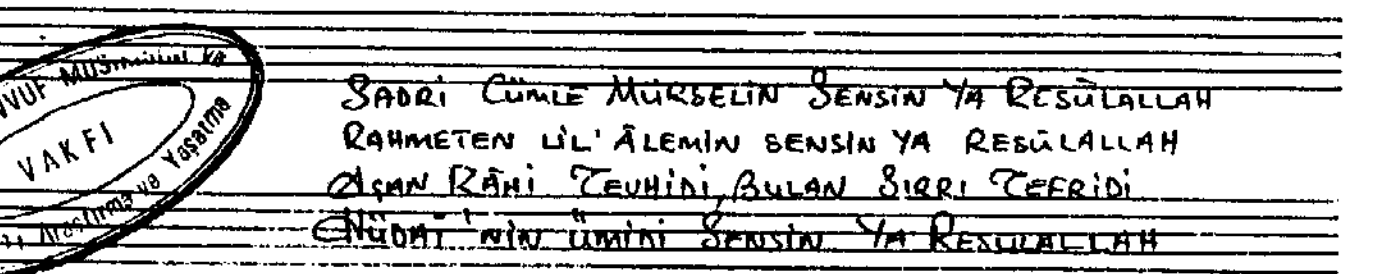
BU- BAN Sİ- R Rİ - - - TE- F Rİ- Dİ



HÜ- DA - - - İ - - - Nİ - - - NÜ- M Mİ Dİ



SEN Sİ-N YA - - - RE- SU - - - LAL LA - - - H



SADRI CÜMLE MURBELİN SENSİN YA RESULALLAH  
RAHMETEN LİL' ÂLEMLERİ SENSİN YA RESULALLAH  
AŞKIN RÂHİ TEVHİDİ, BULAN SİRRİ TEFRİDİ  
HÜDAİ'NİN İMİNİ SENSİN YA RESULALLAH

Sultanıyegâh Mâvîk Evî

Rumeli Cad. Hâk Paşası No. 7 Nispetiye - İSTANBUL Tel :